

## Tennessee's Children <sub>1</sub>

Child Population	1,359,672
Children Living in Poverty	290,932
Child Poverty Rate	21.4%

## Child Abuse and Neglect <sub>2</sub>

Child Victims 14,840

Type of Abuse and Neglect	Percent*
Neglect and Medical Neglect	54.1%
Physical Abuse	31.6%
Sexual Abuse	24.1%
Psychological and Other Maltreatment	0.4%

\*Percentages may not total 100% because abuse or neglect can be reported in one or more categories.

## Foster Care <sub>3</sub>

Number of Children in Foster Care*	9,487	Average Length of Stay in Foster Care	27.7 mos.
Children with 2 or Fewer Placements	53%	Abused and Neglected While in Care	Data Unavailable

\*Foster care includes family foster care, group care and institutional care

## Permanency <sub>4</sub>

Number of Exits from Foster Care 4,288

Type of Exit	Percent
Adoption	22.0%
Reunification	58.9%
Legal Guardianship	0.3%
Other	18.6%
Missing Data	0.1%

Percent of Children Reunified

Within 0-11 months	72.4%
Within 12-23 months	19.2%
After 24 months	8.1%

Percent of Children Adopted

Within 0-11 months	2.8%
Within 12-23 months	11.0%
After 24 months	86.2%

Number of Children Waiting for Adoption 1,974

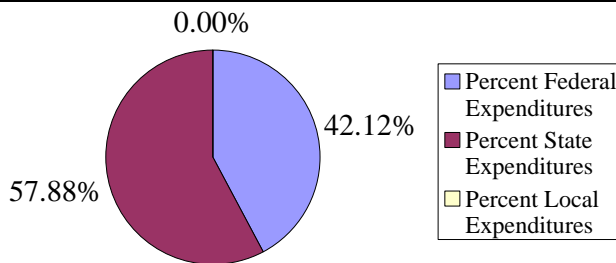
## Relative Caregivers <sub>5</sub>

Number of Children Living with Relatives Without Either Parent Present (not necessarily in foster care)	56,682	Subsidized Guardianship Program?	Yes
---	--------	----------------------------------	-----

*Subsidized guardianship programs make it possible for eligible children to live permanently in the care of a legal guardian who has agreed to provide a safe and loving home for them and who receives ongoing payments to help provide for the needs of the child. In many cases, the child's guardian is a relative or a close family friend.*

## Sources of Child Welfare Spending <sup>6</sup>

FY 2004	Amount
Federal Expenditures	\$190,166,931
State Expenditures	\$261,357,379
Local Expenditures	\$0
Total	\$451,524,310



## Major Federal Child Welfare Spending <sup>6</sup>

FY 2004	Amount	Percent of Total Federal Spending
Title IV-B	\$25,360,164	13.34%
Title IV-E	\$36,602,382	19.25%
Social Services Block Grant (SSBG)	\$27,351,925	14.38%
TANF (Temporary Assistance for Needy Families)	\$0	0.00%
Medicaid (Excludes Medicaid expenditures for routine health care services provided to children in foster care.)	\$93,667,660	49.26%

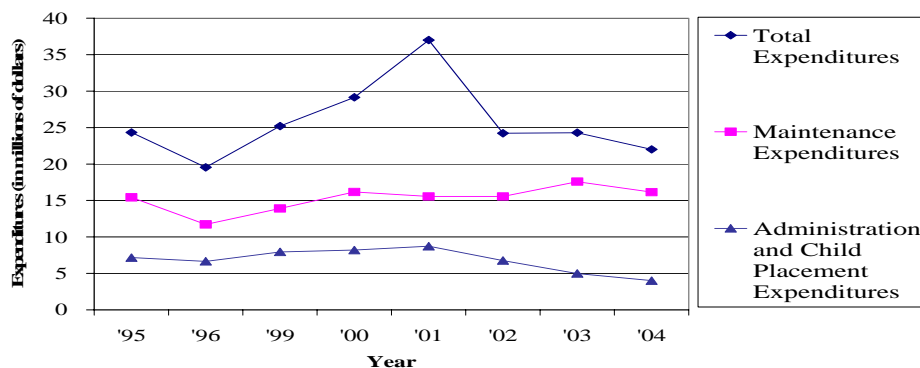
Percentages may not total 100% because some states could not categorize all federal spending by source. The previous version of this fact sheet contained information on spending from SSI. The Urban Institute did not collect that data in the most recent survey.

## Federal Title IV-E Spending <sup>7</sup>

Foster Care Expenditures FY 2004			Adoption Assistance Expenditures FY 2004		
Type	Amount	Percent	Type	Amount	Percent
Maintenance Payments	\$16,136,259	73.32%	Adoption Assistance Payments	\$13,773,851	96.13%
Administration and Child Placement Services	\$4,010,346	18.22%	Administration	\$554,851	3.87%
SACWIS	\$1,861,767	8.46%	Training	\$0	0.00%
Training	\$0	0.00%	Total	\$14,328,702	
Total	\$22,008,372				

- ◆ In 2003, 5,479 (57.75%)\* Children in Foster Care Received Title IV-E Funded Foster Care Payments
- ◆ In 2002, 2,763 (74.82%)\*\* Children Adopted from Foster Care Received IV-E Funded Adoption Assistance Payments

### Federal Title IV-E Foster Care Spending 1995-2004



\*Average monthly number of children receiving federal foster care divided by the number of children in foster care on the last day of the year.

\*\*Average monthly number of children receiving federal adoption assistance divided by the total number of children receiving adoption assistance at a point in time.

### Sources and Notes

\*All data provided are most current available as of September 2006.

- 1) United States Census Bureau, 2005 American Community Survey, Summary Table S1701. Poverty Status in the Past 12 Months Calculations by CDF, August 2006
- 2) U.S. Department of Health and Human Services (DHHS), Children's Bureau, *Child Maltreatment 2004* (Washington, D.C.; Government Printing Office, 2006) Tables 3-2 and 3-5
- 3) The number of children in foster care is the number in foster care on Sept. 30, 2003; U.S. DHHS, Administration on Children, Youth and Families, *Child Welfare Outcomes 2003: Annual Report* (Washington D.C.; Government Printing Office, September 2006), Context Data Chart C; Length of stay and placement data (2001): U.S. Congress, House of Representatives, Committee on Ways and Means, 2004 Greenbook (Washington, D.C.; Government Printing Office, 2004) Charts 11-38 & 11-36; and abuse and neglect data (2003): U.S. DHHS, Administration on Children, Youth and Families, *Child Welfare Outcomes 2003: Annual Report* (Washington D.C.; Government Printing Office, September 2006), Table 2.1
- 4) *Child Welfare Outcomes 2003: Annual Report*, Tables 3.1, 4.1, 5.1, and Context Data Chart D
- 5) U.S. Department of Commerce, Bureau of the Census, *2000 Census American Fact Finder Advanced Query*. Calculations by CDF of the number of children living in relative-headed households without either parent present; and CDF *States' Subsidized Guardianship Laws At A Glance* (Washington, D.C.; CDF, 2006).
- 6) Cynthia Andrews Scarcella, Roseana Bess, Erica Hecht Zielewski, and Rob Geen. *The Cost of Protecting Vulnerable Children V: Understanding State Variation in Child Welfare Financing* (Washington, D.C.; The Urban Institute, 2006).
- 7) U.S. Department of Health and Human Services Expenditure Data for FYs 2000-2004; U.S. Congress, House of Representatives, Committee on Ways and Means, Greenbook: 1996, 1998, 2000, and 2004; and Ursula Gilmore and Elizabeth Oppenheim, Interstate Movement of Children Receiving Adoption Assistance (Wash, D.C.; American Public Human Services Association, 2003).